

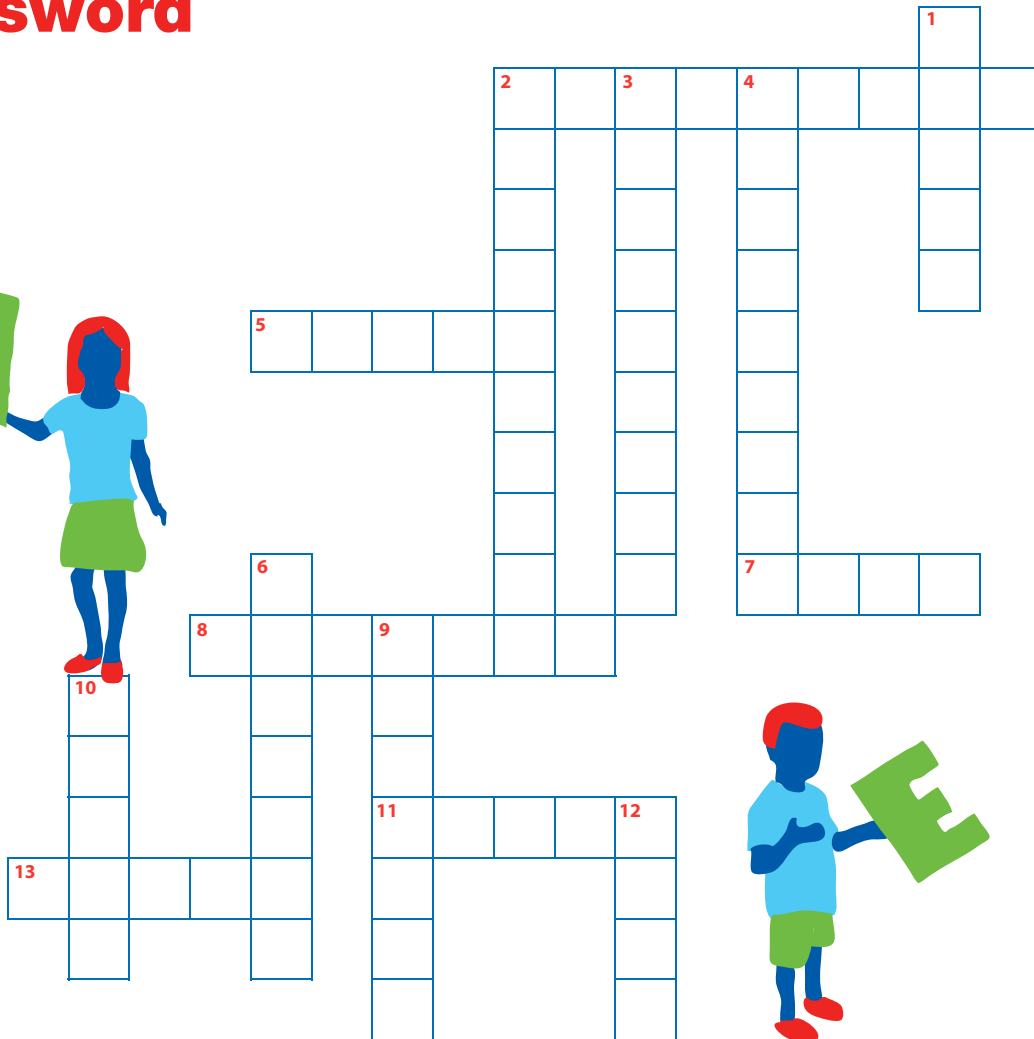
Schools Recycle Right Challenge Crossword

Schools
Recycle
Right



NATIONAL
RECYCLING WEEK

PLANET ARK



Across

- 2 Milk and juice cartons are mostly made of _____
- 5 _____ and cardboard can be collected in most household recycling bins
- 7 An exchange of unwanted items with friends and family that reduces waste is a _____
- 8 Worms make food and garden scraps into _____
- 11 Cans are either made of aluminium or _____
- 13 Reduce, _____, Recycle

Down

- 1 If you do this to your empty aluminium cans, you can fit more in the recycling bin
- 2 '_____ 4 Planet Ark' is a free program to recycle your printer cartridges
- 3 National _____ Week was founded by Planet Ark
- 4 Lead acid _____ are found in cars and can be recycled to recover lead and plastic
- 6 These can be recycled through MobileMuster
- 9 Use reusable bags for shopping, instead of _____ bags
- 10 How many arrows are there in a recycling symbol?
- 12 Take these off bottles and jars before recycling

The Schools Recycle Right Challenge is proudly sponsored by the Packaging Covenant

Major
Sponsor



Associate
Sponsors



Supporting
Sponsor

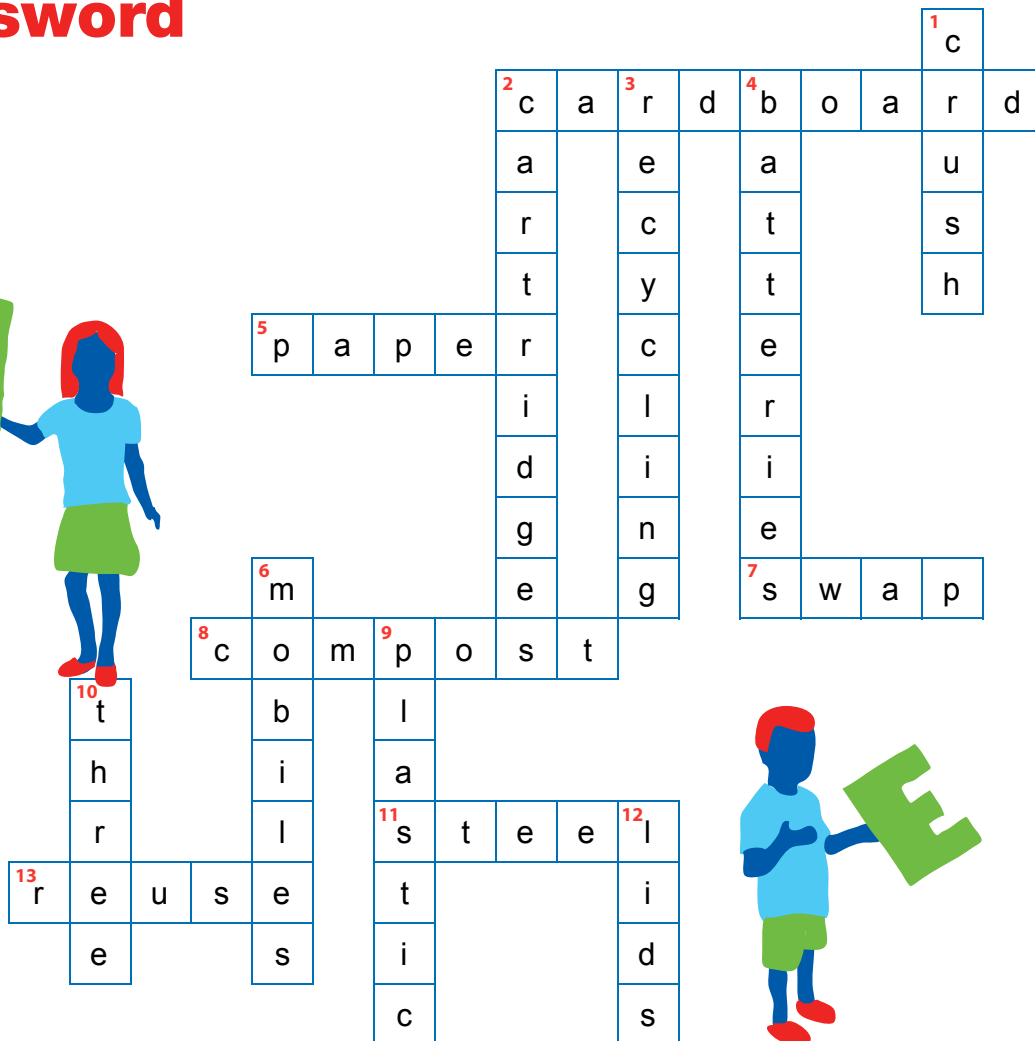


Schools Recycle Right Challenge Crossword

Schools Recycle Right



NATIONAL RECYCLING WEEK
PLANET ARK



Across

- 2 Milk and juice cartons are mostly made of _____
- 5 _____ and cardboard can be collected in most household recycling bins
- 7 An exchange of unwanted items with friends and family that reduces waste is a _____
- 8 Worms make food and garden scraps into _____
- 11 Cans are either made of aluminium or _____
- 13 Reduce, _____, Recycle

Down

- 1 If you do this to your empty aluminium cans, you can fit more in the recycling bin
- 2 '_____ 4 Planet Ark' is a free program to recycle your printer cartridges
- 3 National _____ Week was founded by Planet Ark
- 4 Lead acid _____ are found in cars and can be recycled to recover lead and plastic
- 6 These can be recycled through MobileMuster
- 9 Use reusable bags for shopping, instead of _____ bags
- 10 How many arrows are there in a recycling symbol?
- 12 Take these off bottles and jars before recycling

The Schools Recycle Right Challenge is proudly sponsored by the Packaging Covenant

Major Sponsor



Associate Sponsors



Supporting Sponsor

